

Thorax

Thorax commonly known as chest is the upper part of the trunk. This volume begins with the surface landmarks and dermatomes of the thorax followed by the thoracic cage, its contents and its clinical points.

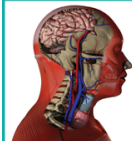
The topics include:

1. Surface landmarks and dermatomes (00:09:50)

- Introduction
- Thorax - Surface landmarks and dermatomes
 - Auscultation of the lungs
 - Cardiac auscultation
 - Clinical importance of the sternal angle
 - Herpes zoster

2. Thoracic cage (00:19:06)

- Introduction
- Thoracic cage
 - Access to pericardial cavity
 - Access to pleural cavity
 - Access to the heart for open heart surgery
 - Counting of the ribs
 - Diaphragmatic hernias
 - Injuries to the thoracic cage - rib fractures and tear of visceral organs
 - Kyphosis, scoliosis, and kyphoscoliosis
 - Respiratory movements of the thoracic cage
 - Sternum – bone marrow aspiration
 - Supernumerary ribs
 - Use of ribs in plastic surgery
 - Vascular pedicle



3. Female breast (00:18:37)

- Introduction
- Female breast
 - CA breast peau D orange
 - Congenital anomalies
 - Gynaecomastia
 - Infections of the breast
 - Inverted nipple
 - Lymphatics of the breast
 - Male breast
 - Mammogram
 - Normal breast, breast during pregnancy, lactating breast
 - Reconstructive surgery of the breast implants
 - Surface anatomy and palpation of breast - importance of periodic self examination for detection of breast lumps
 - Surgical incisions of the breast

4. General disposition of the viscera within the thoracic cage (00:04:53)

- Introduction
- General disposition of the viscera within the thoracic cage

5. Superior mediastinum - Boundaries and contents (00:12:42)

- Introduction
- Superior Mediastinum
 - Anomalies of SVC
 - Aortic knuckle
 - Imaging of the superior mediastinum
 - Mediastinal masses – retrosternal goitre, mediastinal syndrome
 - Patent ductus arteriosus
 - Surgical approach to the superior mediastinum
 - Thymus pathologies

6. Posterior mediastinum – Boundaries and contents (00:14:52f)

- Introduction
- Posterior Mediastinum - Right lateral view with lung removed on right side
- Mediastinum - Left lateral view, with lung removed on left side
 - Aortic pathologies (dissecting aneurysms)
 - Constrictions of the esophagus
 - Esophageal carcinoma
 - Imaging of posterior mediastinum - normal plain X-ray, CT, MRI
 - Mediastinitis
 - Surgical approach to the posterior mediastinum
 - Thoracic duct lacerations - chylo thorax